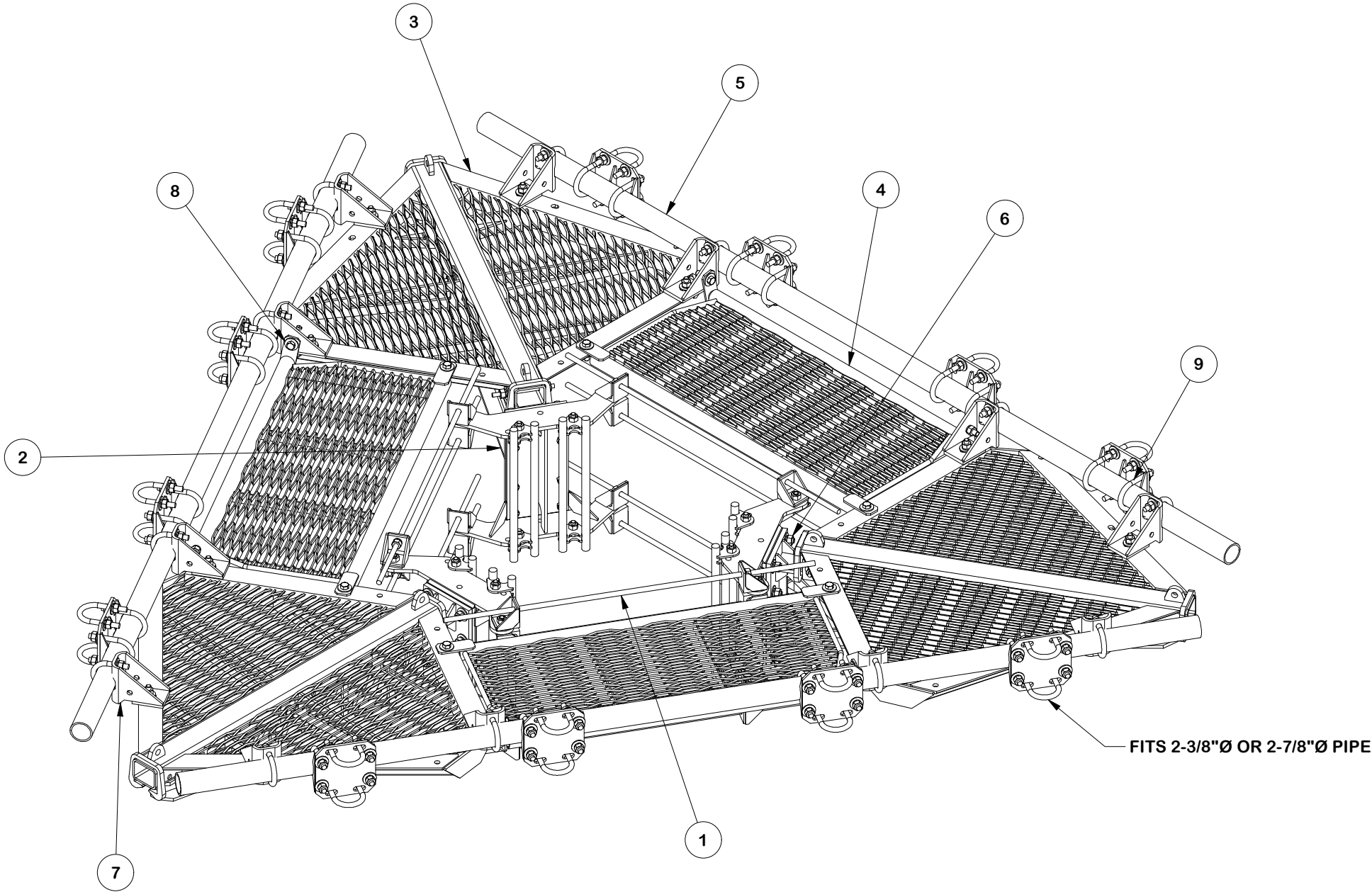


PARTS LIST								
ITEM	QTY	PART NO.	BOX NO.	PART DESCRIPTION	LENGTH	UNIT WT.	NET WT.	
1	1	FLX3-HD		FLEXIBLE RING MOUNT 3-SIDED HEAVY DUTY ASSEMBLY		378.00	378.00	
2	3	X-LPP-SA10		TRUSS ARM WELDMENT FOR 8' AND 10' LOW PROFILE PLATFORMS		99.32	297.97	
3	3	X-LPP-CW		LOW PROFILE PLATFORM CORNER WELDMENT		198.75	596.26	
4	3	X-LPP-W10		WALKWAY FOR 10' LOW PROFILE PLATFORM		60.60	181.81	
5	3	P30132		2-7/8" X 132" (2-1/2" SCH. 40) GALVANIZED PIPE	132 in	67.70	203.11	
6	3	LPPSA-HW	P-LPPSA-HW	TRUSS ARM CONNECTION HARDWARE		4.14	12.43	
7	3	FCWHW	P-FCWHW	FORTRESS CORNER WELDMENT HARDWARE KIT		42.70	128.10	
8	3	FWW-HW	P-HWW-HW	FORTRESS WALKWAY HARDWARE KIT		7.63	22.88	
9	12	SCX3-FR-K	P-SCX3-FR	2-3/8" / 2-7/8" TO 2-3/8" / 2-7/8" HD CROSSOVER KIT		17.53	210.40	
							TOTAL WT. #	2030.97



FINISH:  
HOT DIP GALVANIZED.

TOLERANCE NOTES

TOLERANCES ON DIMENSIONS, UNLESS OTHERWISE NOTED ARE:  
SAWED, SHEARED AND GAS CUT EDGES ( $\pm 0.030"$ )  
DRILLED AND GAS CUT HOLES ( $\pm 0.030"$ ) - NO CONING OF HOLES  
LASER CUT EDGES AND HOLES ( $\pm 0.010"$ ) - NO CONING OF HOLES  
BENDS AND ANGLES ARE  $\pm 1/2$  DEGREE  
ALL OTHER MACHINING ( $\pm 0.030"$ )  
ALL OTHER ASSEMBLY ( $\pm 0.060"$ )

PATENT INFORMATION: WWW.SITEPRO1.COM/PATENTS

PROPRIETARY NOTE:  
THE DATA AND TECHNIQUES CONTAINED IN THIS DRAWING ARE PROPRIETARY INFORMATION OF VALMONT INDUSTRIES AND CONSIDERED A TRADE SECRET. ANY USE OR DISCLOSURE WITHOUT THE CONSENT OF VALMONT INDUSTRIES IS STRICTLY PROHIBITED.

DESCRIPTION

10' FLEX FORTRESS™ TRI-PLATFORM MOUNT  
WITH WALKWAYS

CPD NO.

SP1

DRAWN BY

NSP 12/4/2024

ENG. APPROVAL

1/1/2025

CLASS

87

SUB

02

DRAWING USAGE

CUSTOMER

CHECKED BY

JET

1/1/2025



A valmont COMPANY

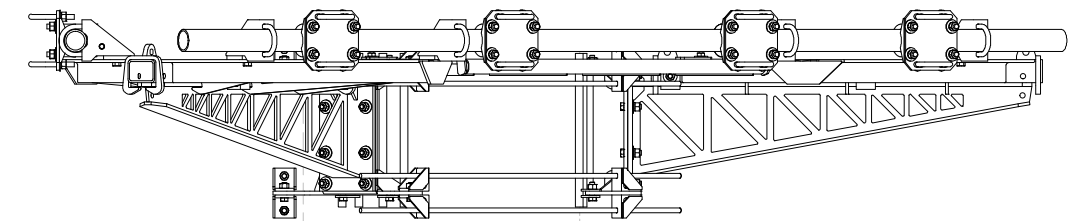
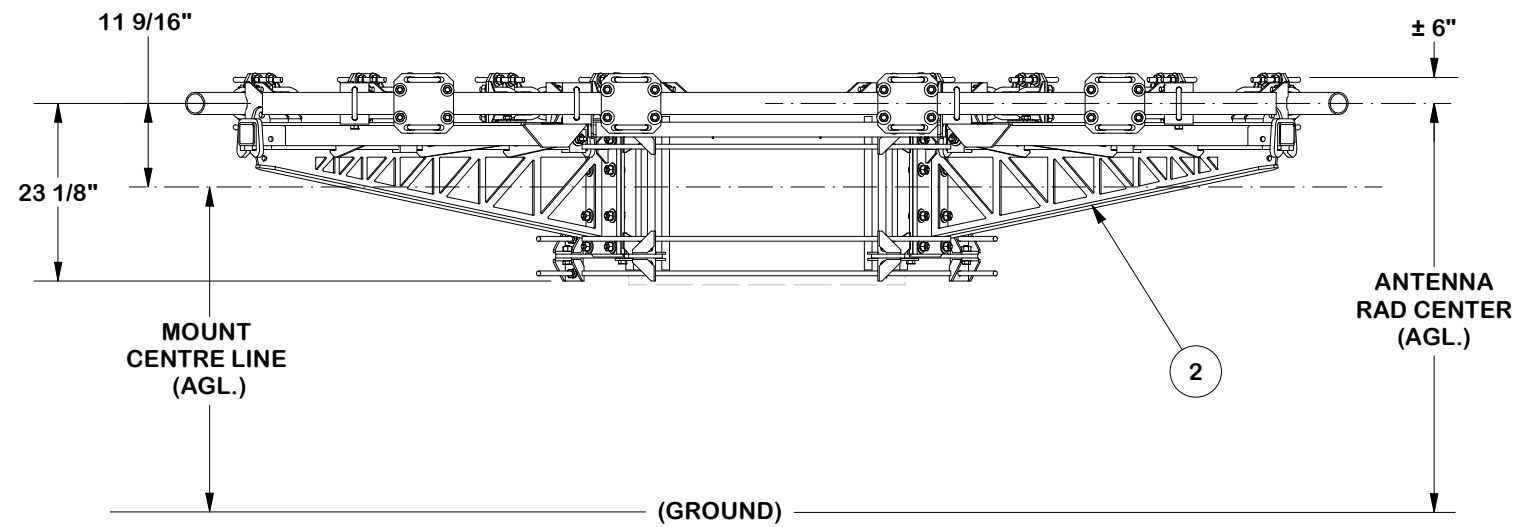
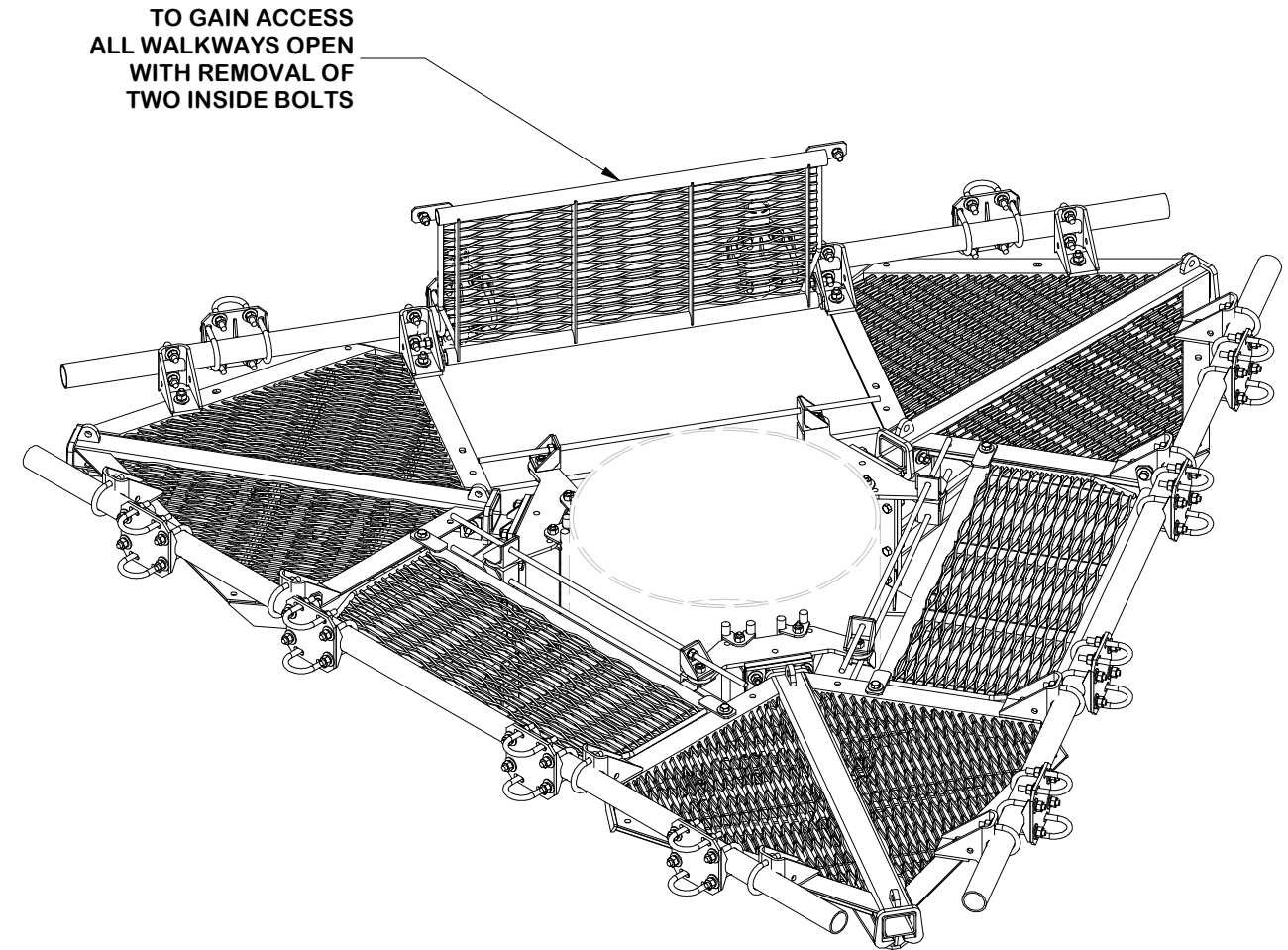
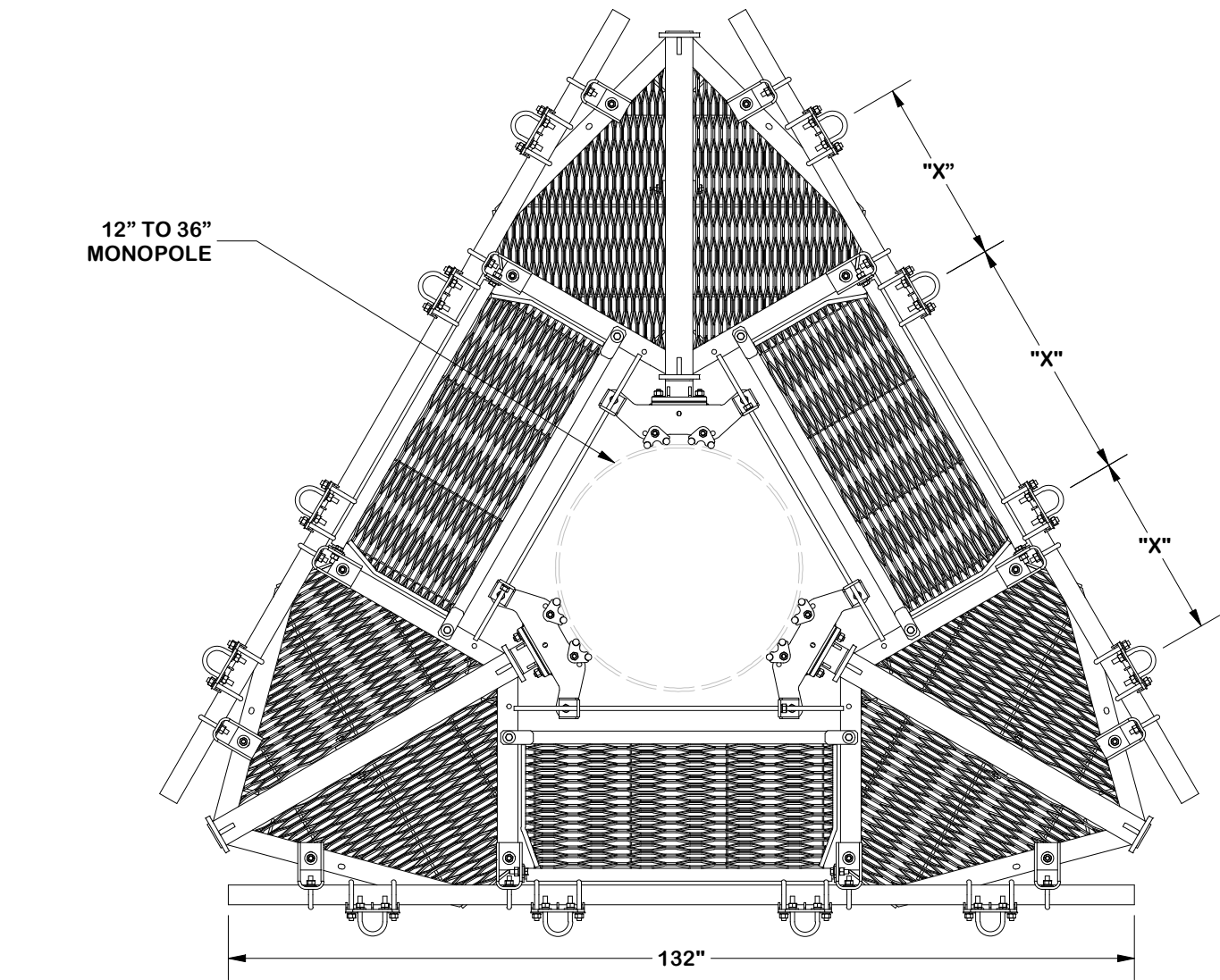
Engineering  
Support Team:  
sp1engineering@valmont.com

PART NO.

FX3P-10W

DWG. NO.

FX3P-10W



### TOLERANCE NOTES

TOLERANCES ON DIMENSIONS, UNLESS OTHERWISE NOTED ARE:  
SAWED, SHEARED AND GAS CUT EDGES ( $\pm 0.030$ "")  
DRILLED AND GAS CUT HOLES ( $\pm 0.030$ "") - NO CONING OF HOLES  
LASER CUT EDGES AND HOLES ( $\pm 0.010$ "") - NO CONING OF HOLES  
BENDS AND ANGLES ARE  $\pm 1/2$  DEGREE  
ALL OTHER MACHINING ( $\pm 0.030$ "")  
ALL OTHER ASSEMBLY ( $\pm 0.060$ "")

PATENT INFORMATION: [WWW.SITEPRO1.COM/PATENTS](http://WWW.SITEPRO1.COM/PATENTS)

PROPRIETARY NOTE:  
THE DATA AND TECHNIQUES CONTAINED IN THIS DRAWING ARE PROPRIETARY INFORMATION OF VALMONT INDUSTRIES AND CONSIDERED A TRADE SECRET. ANY USE OR DISCLOSURE WITHOUT THE CONSENT OF VALMONT INDUSTRIES IS STRICTLY PROHIBITED.

### DESCRIPTION

10' FLEX FORTRESS™ TRI-PLATFORM MOUNT  
WITH WALKWAYS

CPD NO.

SP1

DRAWN BY

NSP 12/4/2024

ENG. APPROVAL

1/1/2025

CLASS

87

SUB

02

DRAWING USAGE

CUSTOMER

CHECKED BY

JET

1/1/2025

PART NO.

FX3P-10W

DWG. NO.

FX3P-10W



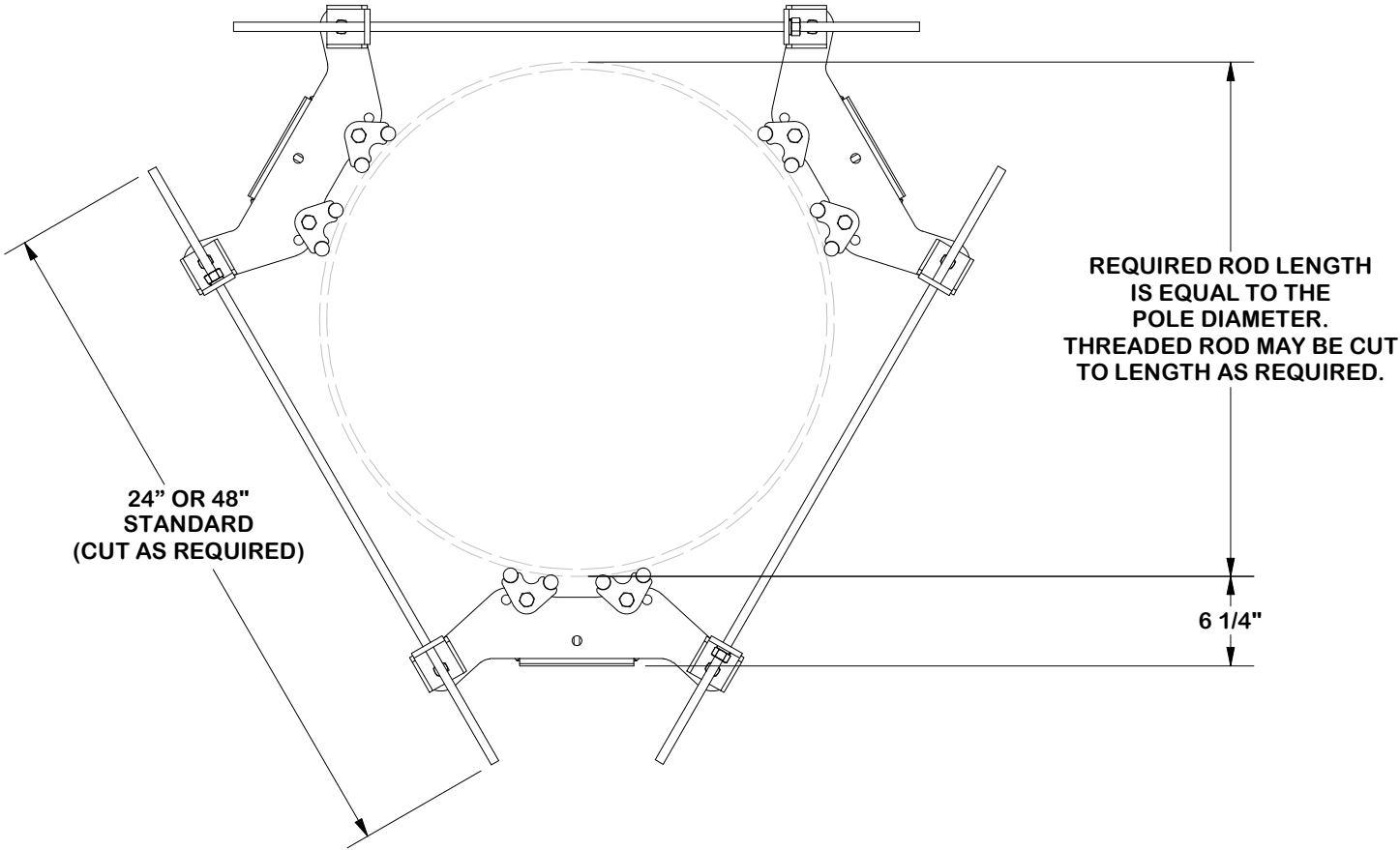
A valmont COMPANY

Engineering  
Support Team:  
[sp1engineering@valmont.com](mailto:sp1engineering@valmont.com)

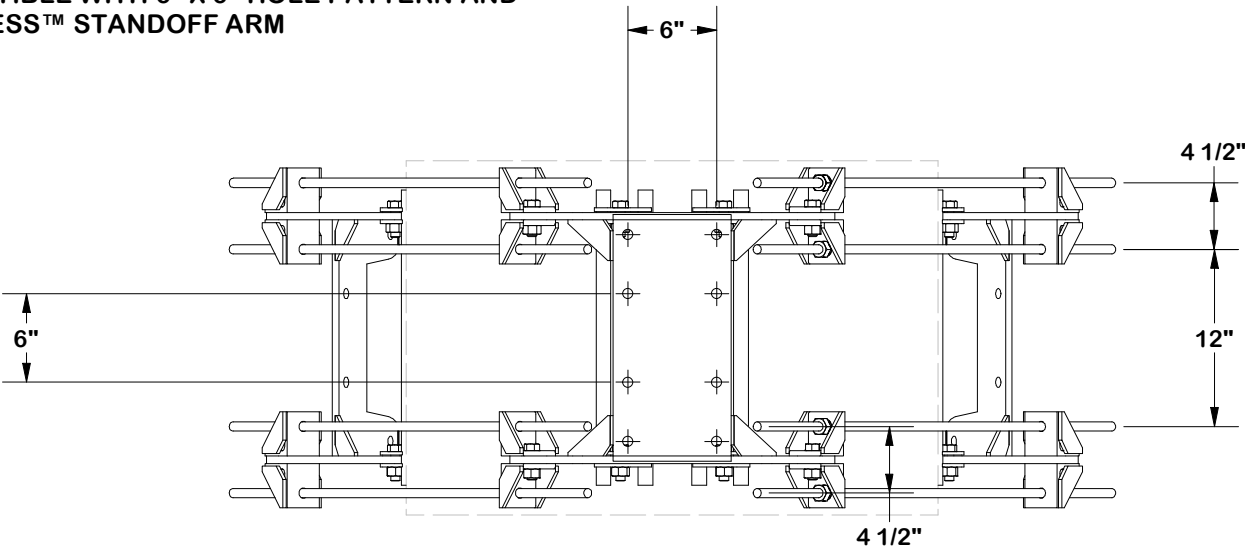


HEAVY STAMP  
PART NUMBER

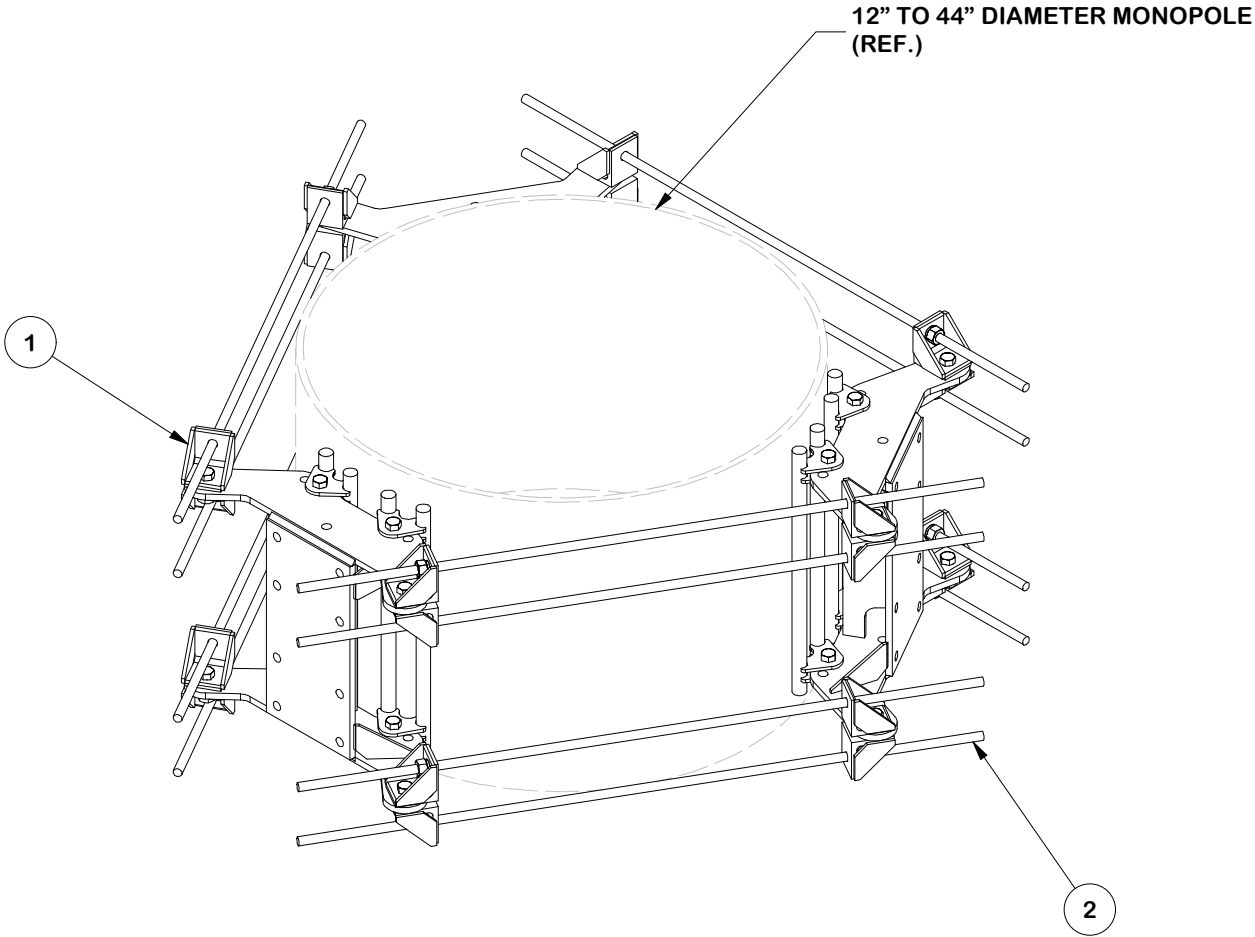
PARTS LIST						
ITEM	QTY	PART NO.	BOX NO.	PART DESCRIPTION	UNIT WT.	NET WT.
1	3	FLX-HDSS	P-FLX-HDSS	FLEXIBLE RING MOUNT HEAVY-DUTY SINGLE SECTOR ASSEMBLY	98.32	294.97
2	3	HDRM-HW	P-HDRM-HW	FLEXIBLE RING MOUNT HARWARE KIT	27.68	83.03
TOTAL WT. #						378.00



NOTE:  
COMPATIBLE WITH 6" X 6" HOLE PATTERN AND  
FORTRESS™ STANDOFF ARM



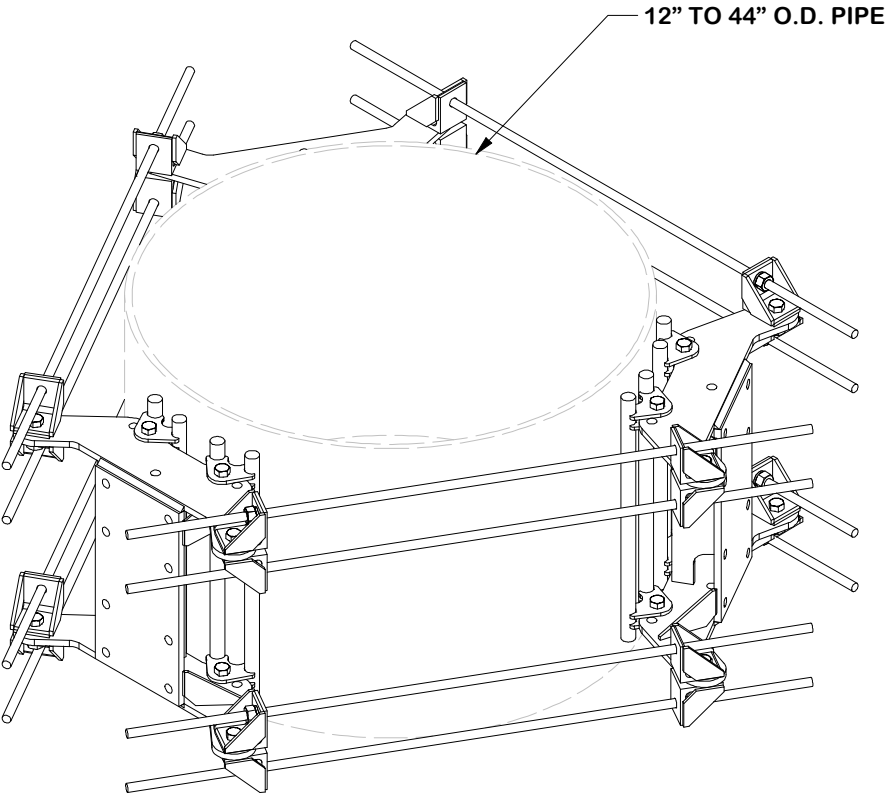
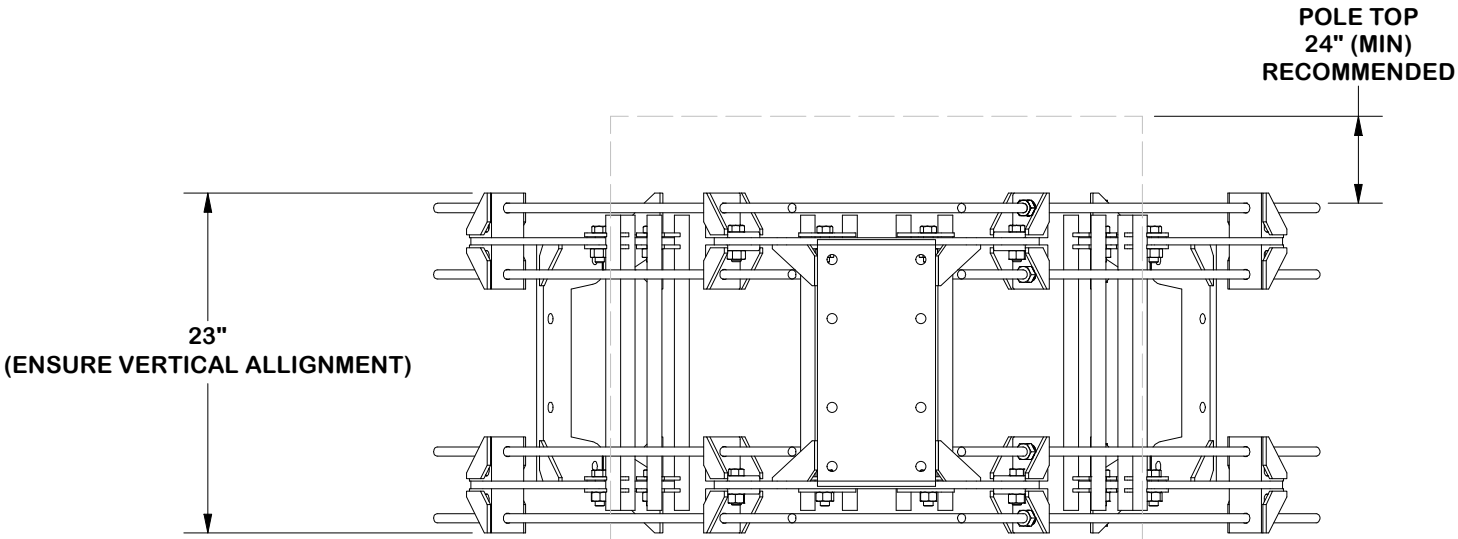
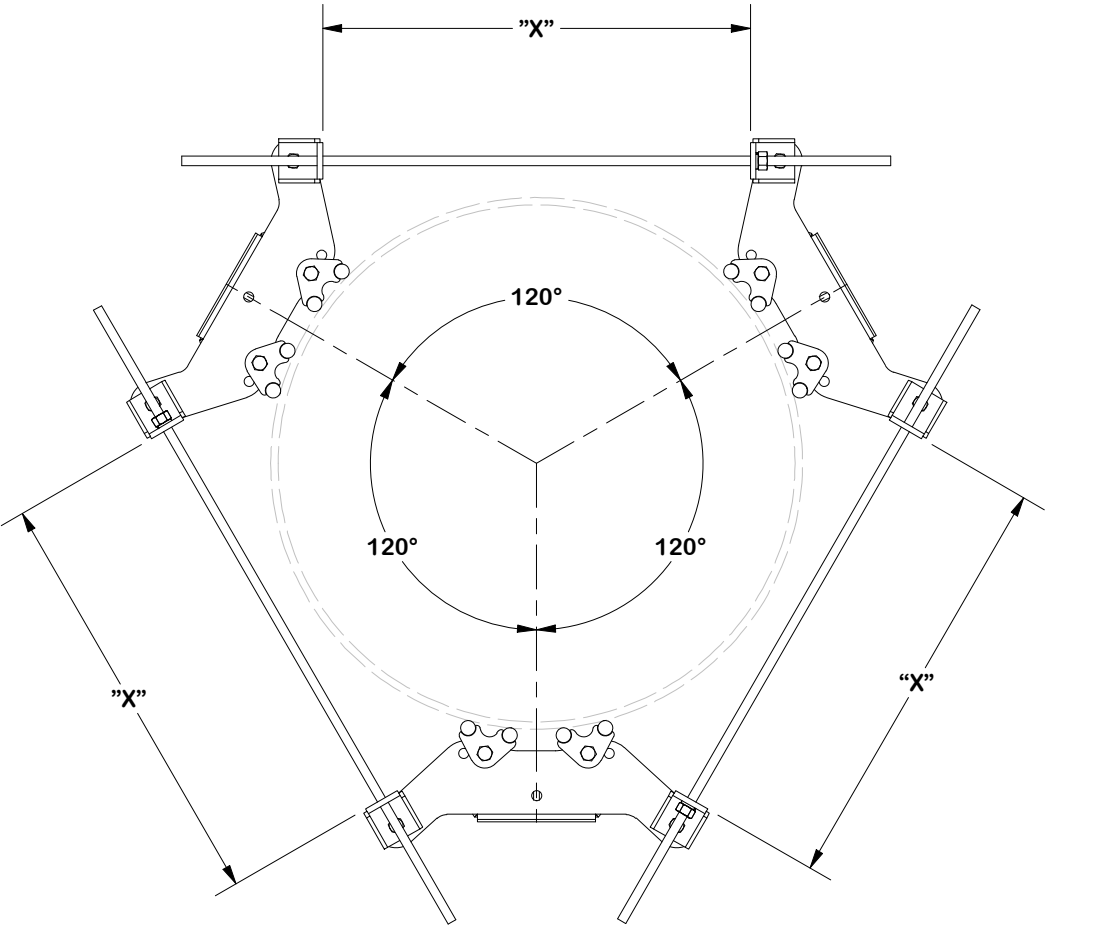
FINISH:  
HOT DIP GALVANIZED.



NOTE: FOR INSTALL ON UN-REINFORCED  
OPEN SECTIONS INSTALL 30" BELOW TOP  
OF POLE TO TOP FLANGE OR AS EOR  
DIRECTS

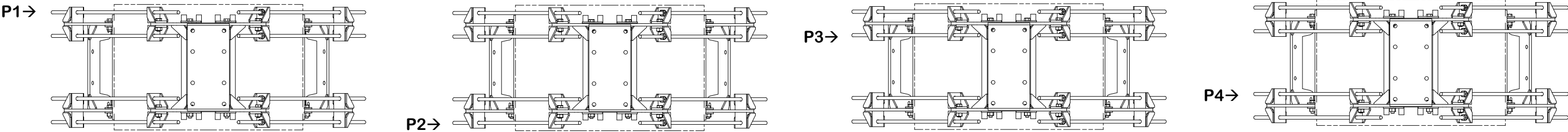
					TOLERANCE NOTES	DESCRIPTION			SITE PRO 1		Engineering Support Team: sp1engineering@valmont.com
					TOLERANCES ON DIMENSIONS, UNLESS OTHERWISE NOTED ARE: SAWED, SHEARED AND GAS CUT EDGES ( $\pm 0.030"$ ) DRILLED AND GAS CUT HOLES ( $\pm 0.030"$ ) - NO CONING OF HOLES LASER CUT EDGES AND HOLES ( $\pm 0.010"$ ) - NO CONING OF HOLES BENDS AND ANGLES ARE $\pm 1/2$ DEGREE ALL OTHER MACHINING ( $\pm 0.030"$ ) ALL OTHER ASSEMBLY ( $\pm 0.060"$ )	10' FLEX FORTRESS™ TRI-PLATFORM MOUNT WITH WALKWAYS			A valmont COMPANY		
A	CHANGED KITS	SP1	NSP	12/12/2024		CPD NO. SP1	DRAWN BY NSP 12/4/2024	ENG. APPROVAL 1/1/2025	PART NO. FLX3-HD		3 OF 12 PAGE
REV	DESCRIPTION OF REVISIONS	CPD	BY	DATE	PATENT INFORMATION: WWW.SITEPRO1.COM/PATENTS	CLASS 87	SUB 02	DRAWING USAGE CUSTOMER	CHECKED BY JET 1/1/2025	DWG. NO. FX3P-10W	
REVISION HISTORY					PROPRIETARY NOTE: THE DATA AND TECHNIQUES CONTAINED IN THIS DRAWING ARE PROPRIETARY INFORMATION OF VALMONT INDUSTRIES AND CONSIDERED A TRADE SECRET. ANY USE OR DISCLOSURE WITHOUT THE CONSENT OF VALMONT INDUSTRIES IS STRICTLY PROHIBITED.						

NOTE:  
ENSURE EQUAL DISTANCE  
BETWEEN BRACKETS "X"  
AND AT 120° APART

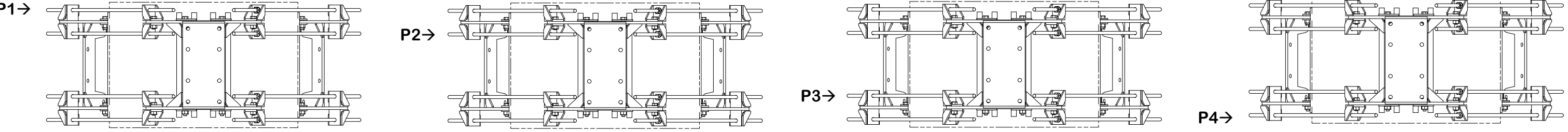


					TOLERANCE NOTES		DESCRIPTION			SITE PRO 1		Engineering Support Team: sp1engineering@valmont.com	
					TOLERANCES ON DIMENSIONS, UNLESS OTHERWISE NOTED ARE: SAWED, SHEARED AND GAS CUT EDGES (± 0.030") DRILLED AND GAS CUT HOLES (± 0.030") - NO CONING OF HOLES LASER CUT EDGES AND HOLES (± 0.010") - NO CONING OF HOLES BENDS AND ANGLES ARE ± 1/2 DEGREE ALL OTHER MACHINING (± 0.030") ALL OTHER ASSEMBLY (± 0.060")		10' FLEX FORTRESS™ TRI-PLATFORM MOUNT WITH WALKWAYS			A valmont COMPANY			
A	CHANGED KITS	SP1	NSP	12/12/2024	PATENT INFORMATION: WWW.SITEPRO1.COM/PATENTS		CPD NO. SP1	DRAWN BY NSP 12/4/2024	ENG. APPROVAL 1/1/2025	PART NO. FLX3-HD			
REV	DESCRIPTION OF REVISIONS	CPD	BY	DATE	PROPRIETARY NOTE: THE DATA AND TECHNIQUES CONTAINED IN THIS DRAWING ARE PROPRIETARY INFORMATION OF VALMONT INDUSTRIES AND CONSIDERED A TRADE SECRET. ANY USE OR DISCLOSURE WITHOUT THE CONSENT OF VALMONT INDUSTRIES IS STRICTLY PROHIBITED.		CLASS 87	SUB 02	DRAWING USAGE CUSTOMER	CHECKED BY JET 1/1/2025	DWG. NO. FX3P-10W		4 OF 12 PAGE
REVISION HISTORY													

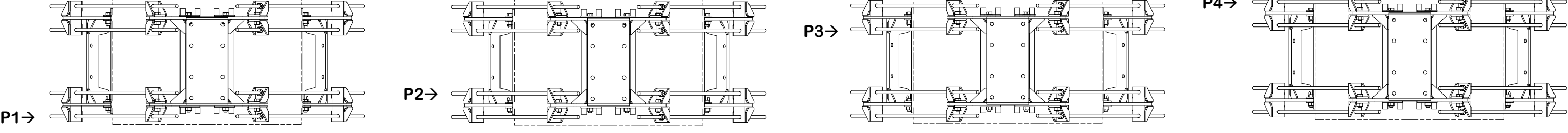
INSTALL ORDER



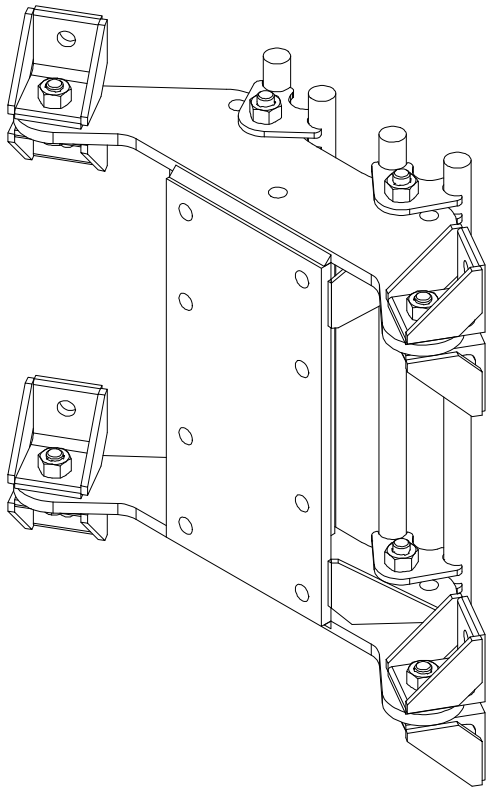
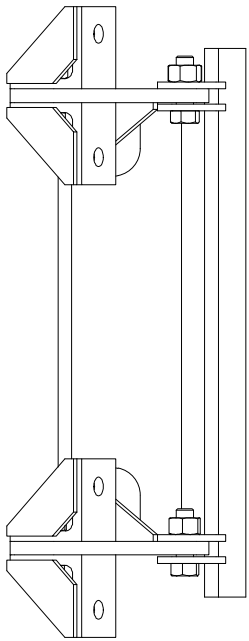
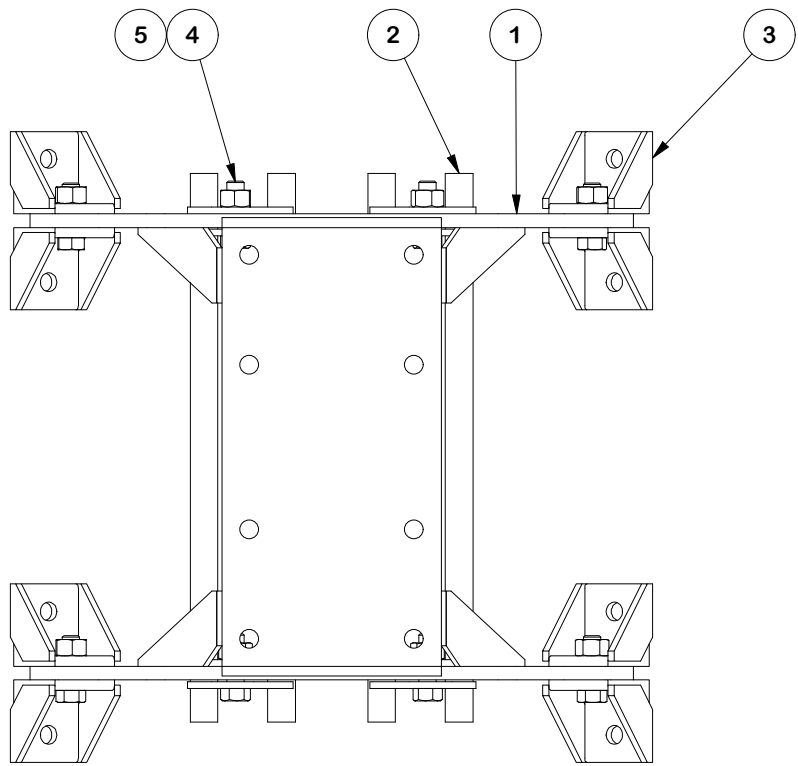
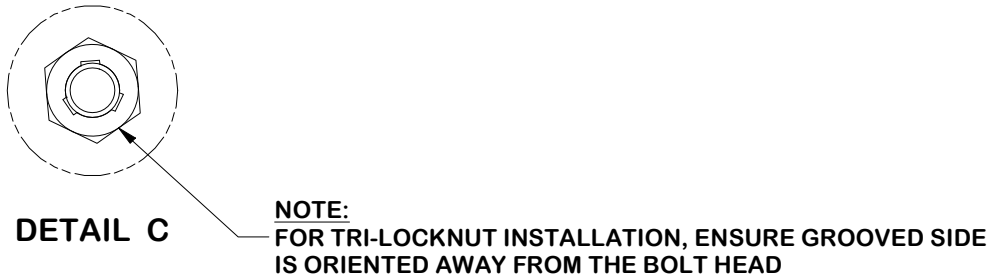
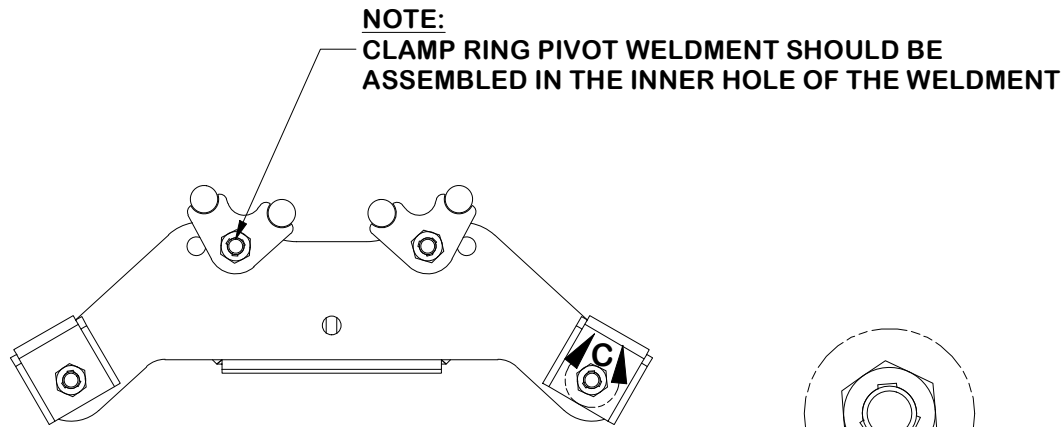
INITIAL TIGHTENING



FINAL TIGHTENING



					<b>TOLERANCE NOTES</b>  TOLERANCES ON DIMENSIONS, UNLESS OTHERWISE NOTED ARE: SAWED, SHEARED AND GAS CUT EDGES ( $\pm 0.030"$ ) DRILLED AND GAS CUT HOLES ( $\pm 0.030"$ ) - NO CONING OF HOLES LASER CUT EDGES AND HOLES ( $\pm 0.010"$ ) - NO CONING OF HOLES BENDS AND ANGLES ARE $\pm 1/2$ DEGREE ALL OTHER MACHINING ( $\pm 0.030"$ ) ALL OTHER ASSEMBLY ( $\pm 0.060"$ )	<b>DESCRIPTION</b>  10' FLEX FORTRESS™ TRI-PLATFORM MOUNT WITH WALKWAYS			<div><div><div>SITE PRO1</div><div>A valmont COMPANY</div></div><div>Engineering Support Team: sp1engineering@valmont.com</div></div>	PAGE 5 OF 12
A	CHANGED KITS	SP1	NSP	12/12/2024	PATENT INFORMATION: WWW.SITEPRO1.COM/PATENTS	CPD NO. SP1	DRAWN BY NSP 12/4/2024	ENG. APPROVAL 1/1/2025	PART NO. FLX3-HD	
REV	DESCRIPTION OF REVISIONS REVISION HISTORY	CPD	BY	DATE	PROPRIETARY NOTE: THE DATA AND TECHNIQUES CONTAINED IN THIS DRAWING ARE PROPRIETARY INFORMATION OF VALMONT INDUSTRIES AND CONSIDERED A TRADE SECRET. ANY USE OR DISCLOSURE WITHOUT THE CONSENT OF VALMONT INDUSTRIES IS STRICTLY PROHIBITED.	CLASS 87	SUB 02	DRAWING USAGE CUSTOMER	CHECKED BY JET 1/1/2025	DWG. NO. FX3P-10W



PARTS LIST					
ITEM	QTY	PART NO.	PART DESCRIPTION	UNIT WT.	NET WT.
1	1	X-CR-HDW	HEAVY FLEXIBLE RING MOUNT	55.25	55.25
2	2	X-CR-PW20	20" CLAMP RING PIVOT WELDMENT	11.12	22.25
3	8	X-CR-AGW	ANGLE ON WELDMENT	2.20	17.57
4	8	G5802	5/8" x 2" HDG HEX BOLT GR5	0.27	2.16
5	8	G58TRI-LNUT	5/8" HDG HEAVY 2H TRI-LOCK NUT	0.14	1.10
TOTAL WT. #					98.32

**FINISH:**  
HOT DIP GALVANIZED.

**TOLERANCE NOTES**

TOLERANCES ON DIMENSIONS, UNLESS OTHERWISE NOTED ARE:  
SAWED, SHEARED AND GAS CUT EDGES ( $\pm 0.030"$ )  
DRILLED AND GAS CUT HOLES ( $\pm 0.030"$ ) - NO CONING OF HOLES  
LASER CUT EDGES AND HOLES ( $\pm 0.010"$ ) - NO CONING OF HOLES  
BENDS AND ANGLES ARE  $\pm 1/2$  DEGREE  
ALL OTHER MACHINING ( $\pm 0.030"$ )  
ALL OTHER ASSEMBLY ( $\pm 0.060"$ )

PATENT INFORMATION: WWW.SITEPRO1.COM/PATENTS

PROPRIETARY NOTE:  
THE DATA AND TECHNIQUES CONTAINED IN THIS DRAWING ARE PROPRIETARY INFORMATION OF VALMONT INDUSTRIES AND CONSIDERED A TRADE SECRET. ANY USE OR DISCLOSURE WITHOUT THE CONSENT OF VALMONT INDUSTRIES IS STRICTLY PROHIBITED.

DESCRIPTION  
**10' FLEX FORTRESS™ TRI-PLATFORM MOUNT  
WITH WALKWAYS**

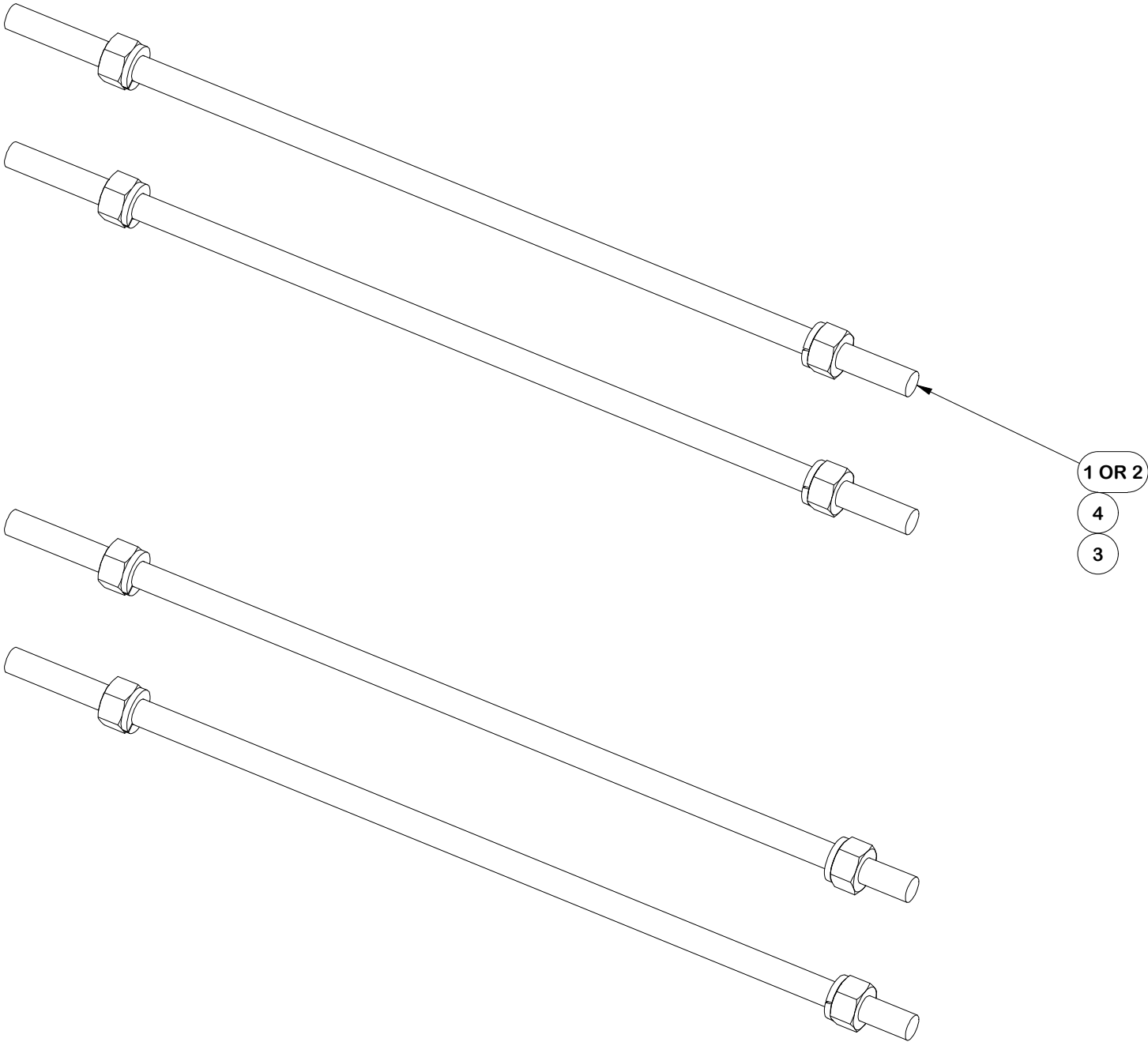
CPD NO. <b>SP1</b>		DRAWN BY <b>NSP 12/4/2024</b>	ENG. APPROVAL <b>1/1/2025</b>
CLASS <b>87</b>	SUB <b>02</b>	DRAWING USAGE <b>CUSTOMER</b>	CHECKED BY <b>JET 1/1/2025</b>




Engineering  
Support Team:  
sp1engineering@valmont.com

PART NO. <b>FLX-HDSS</b>	6 OF 12 PAGE
DWG. NO. <b>FX3P-10W</b>	

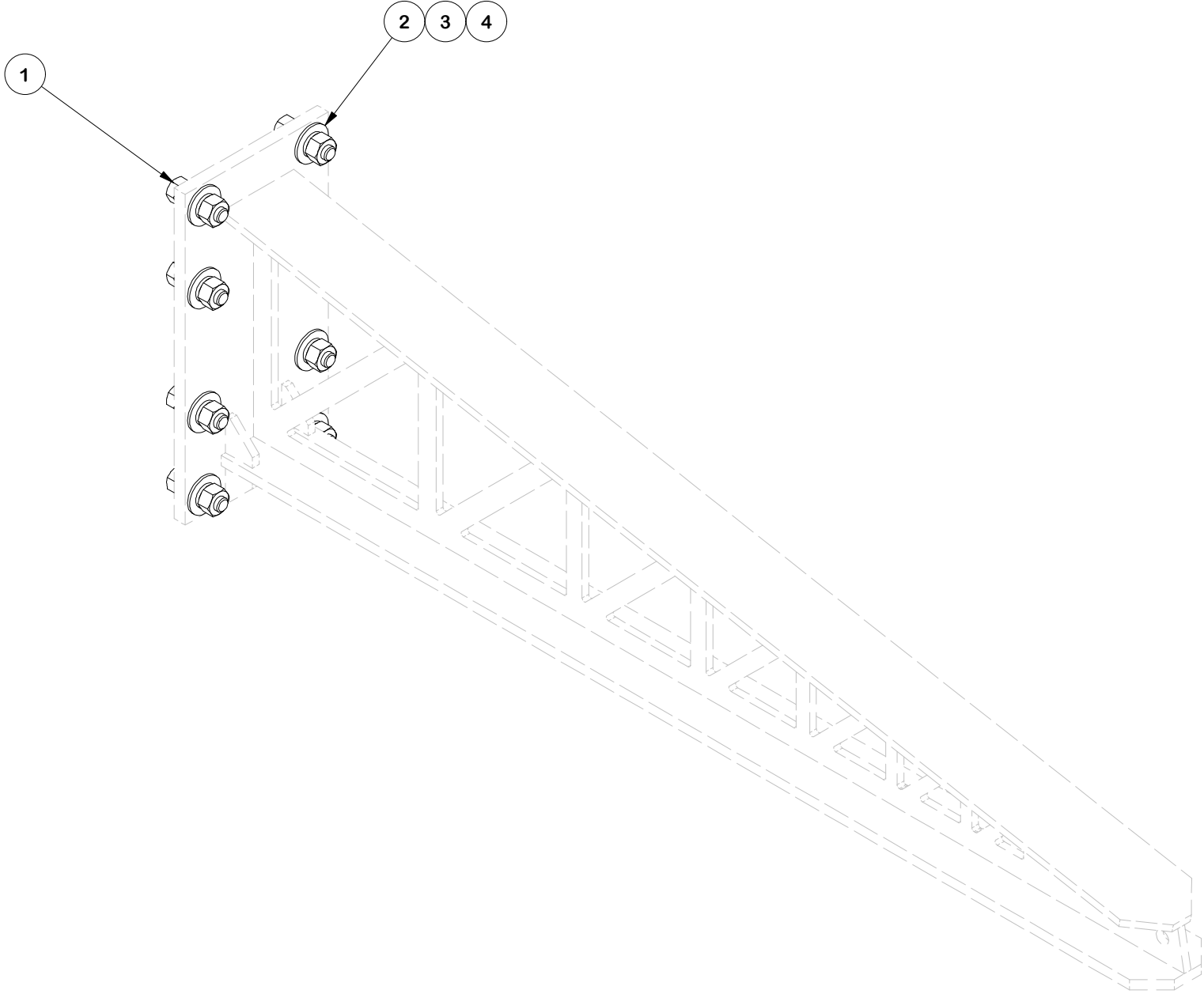
PARTS LIST					
ITEM	QTY	PART NO.	PART DESCRIPTION	UNIT WT.	NET WT.
1	4	G58R-48	5/8" X 48" GALV THREADED ROD	4.39	17.56
2	4	G58R-24	5/8" X 24" THREADED ROD (HDG.)	2.22	8.87
3	8	G58LW	5/8" HDG LOCKWASHER	0.03	0.21
4	8	G58NUT	5/8" HDG HEAVY 2H HEX NUT	0.13	1.04
TOTAL WT. #					28.30



FINISH:  
HOT DIP GALVANIZED.

	<div>TOLERANCE NOTES</div> <div>TOLERANCES ON DIMENSIONS, UNLESS OTHERWISE NOTED ARE: SAWED, SHEARED AND GAS CUT EDGES (<math>\pm 0.030''</math>) DRILLED AND GAS CUT HOLES (<math>\pm 0.030''</math>) - NO CONING OF HOLES LASER CUT EDGES AND HOLES (<math>\pm 0.010''</math>) - NO CONING OF HOLES BENDS AND ANGLES ARE <math>\pm 1/2</math> DEGREE ALL OTHER MACHINING (<math>\pm 0.030''</math>) ALL OTHER ASSEMBLY (<math>\pm 0.060''</math>)</div>		<div>DESCRIPTION</div> <div>10' FLEX FORTRESS™ TRI-PLATFORM MOUNT WITH WALKWAYS</div>			<div><div><div>SITE PRO</div><div>1</div></div><div>Engineering Support Team: sp1engineering@valmont.com</div></div> <div>A valmont  COMPANY</div>	
	PATENT INFORMATION: WWW.SITEPRO1.COM/PATENTS		CPD NO. SP1	DRAWN BY NSP 12/4/2024	ENG. APPROVAL 1/1/2025	PART NO. HDRM-HW	
	PROPRIETARY NOTE: THE DATA AND TECHNIQUES CONTAINED IN THIS DRAWING ARE PROPRIETARY INFORMATION OF VALMONT INDUSTRIES AND CONSIDERED A TRADE SECRET. ANY USE OR DISCLOSURE WITHOUT THE CONSENT OF VALMONT INDUSTRIES IS STRICTLY PROHIBITED.		CLASS 87	SUB 02	DRAWING USAGE CUSTOMER	CHECKED BY JET 1/1/2025	DWG. NO. FX3P-10W
			7 OF 12				

PARTS LIST					
ITEM	QTY	PART NO.	PART DESCRIPTION	LENGTH	UNIT WT.
1	8	G58214	5/8" x 2-1/4" HDG HEX BOLT GR5		0.29
2	8	G58FW	5/8" HDG USS FLATWASHER	1/8 in	0.07
3	8	G58LW	5/8" HDG LOCKWASHER		0.03
4	8	G58NUT	5/8" HDG HEAVY 2H HEX NUT		0.13
TOTAL WT. #					4.14



TOLERANCE NOTES

TOLERANCES ON DIMENSIONS, UNLESS OTHERWISE NOTED ARE:  
SAWED, SHEARED AND GAS CUT EDGES ( $\pm 0.030''$ )  
DRILLED AND GAS CUT HOLES ( $\pm 0.030''$ ) - NO CONING OF HOLES  
LASER CUT EDGES AND HOLES ( $\pm 0.010''$ ) - NO CONING OF HOLES  
BENDS AND ANGLES ARE  $\pm 1/2$  DEGREE  
ALL OTHER MACHINING ( $\pm 0.030''$ )  
ALL OTHER ASSEMBLY ( $\pm 0.060''$ )

PATENT INFORMATION: WWW.SITEPRO1.COM/PATENTS

PROPRIETARY NOTE:  
THE DATA AND TECHNIQUES CONTAINED IN THIS DRAWING ARE PROPRIETARY INFORMATION OF VALMONT INDUSTRIES AND CONSIDERED A TRADE SECRET. ANY USE OR DISCLOSURE WITHOUT THE CONSENT OF VALMONT INDUSTRIES IS STRICTLY PROHIBITED.

DESCRIPTION  
10' FLEX FORTRESS™ TRI-PLATFORM MOUNT  
WITH WALKWAYS

CPD NO. SP1		DRAWN BY NSP 12/4/2024	ENG. APPROVAL 1/1/2025
CLASS 87	SUB 02	DRAWING USAGE CUSTOMER	CHECKED BY JET 1/1/2025

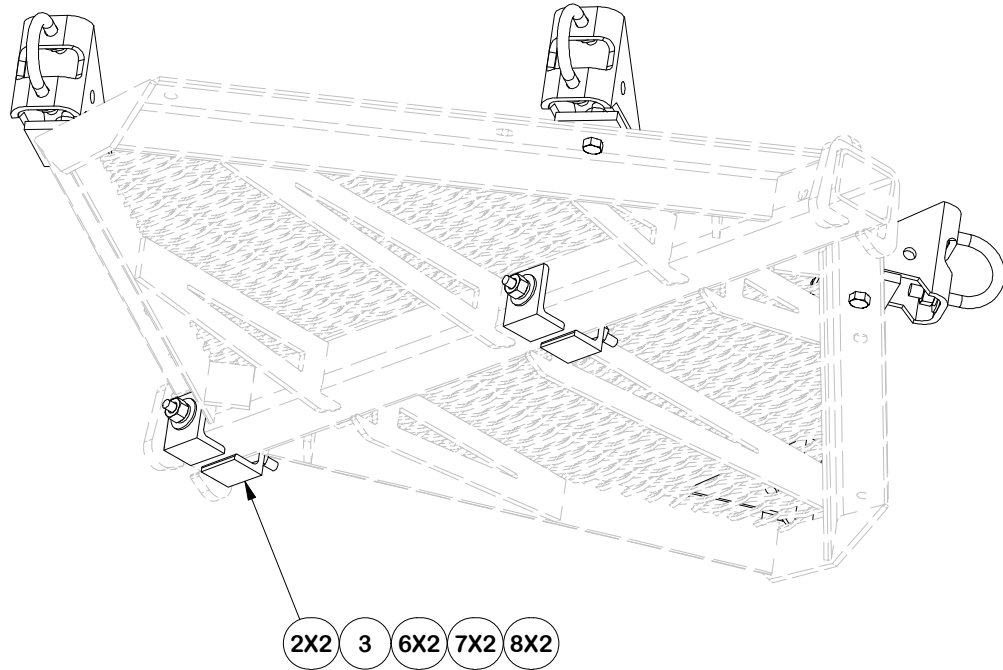
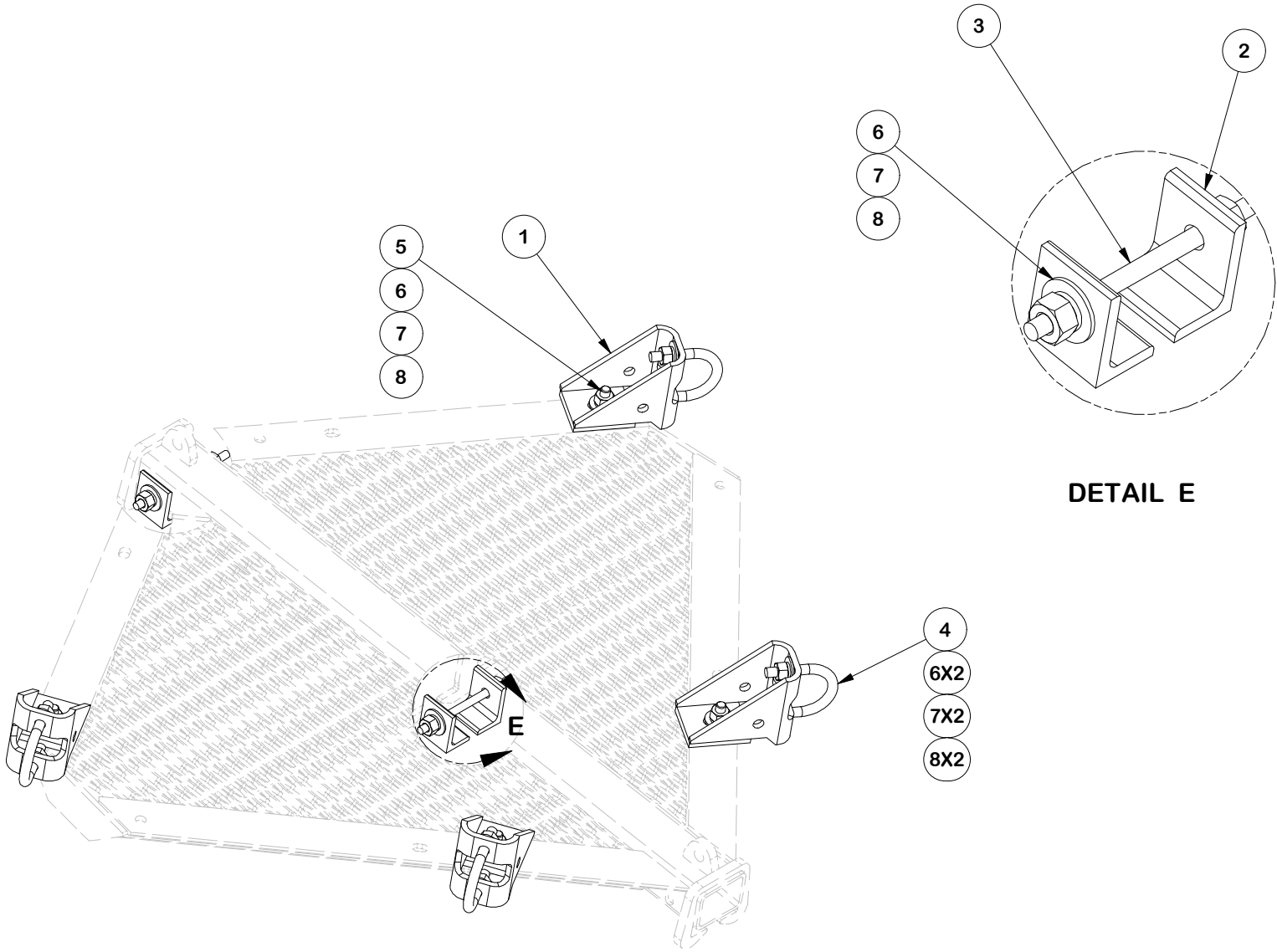


Engineering  
Support Team:  
sp1engineering@valmont.com

PART NO. LPPSA-HW	PAGE 8 OF 12
DWG. NO. FX3P-10W	



PARTS LIST						
ITEM	QTY	PART NO.	PART DESCRIPTION	LENGTH	UNIT WT.	NET WT.
1	4	X-LPP-PC	FACE PIPE CONNECTION BRACKET FORTRESS PLATFORM		7.01	28.04
2	4	X-LPP-A7	CORNER WELDMENT ATTACHMENT ANGLE	2 1/2 in	1.27	5.08
3	2	G12R-8	1/2" x 8" THREADED ROD (HDG.)		0.45	0.89
4	4	X-UB5304	5/8" X 3" X 4-1/4" X 2-1/2" U-BOLT (HDG.)		0.98	3.90
5	4	G58214	5/8" x 2-1/4" HDG HEX BOLT GR5		0.29	1.17
6	16	G58FW	5/8" HDG USS FLATWASHER	1/8 in	0.07	1.13
7	16	G58LW	5/8" HDG LOCKWASHER		0.03	0.42
8	16	G58NUT	5/8" HDG HEAVY 2H HEX NUT		0.13	2.08
					TOTAL WT. #	42.70



REPRESENTATION VIEW FOR  
3-SIDED FORTRESS

TOLERANCE NOTES

TOLERANCES ON DIMENSIONS, UNLESS OTHERWISE NOTED ARE:  
SAWED, SHEARED AND GAS CUT EDGES ( $\pm 0.030"$ )  
DRILLED AND GAS CUT HOLES ( $\pm 0.030"$ ) - NO CONING OF HOLES  
LASER CUT EDGES AND HOLES ( $\pm 0.010"$ ) - NO CONING OF HOLES  
BENDS AND ANGLES ARE  $\pm 1/2$  DEGREE  
ALL OTHER MACHINING ( $\pm 0.030"$ )  
ALL OTHER ASSEMBLY ( $\pm 0.060"$ )

PATENT INFORMATION: WWW.SITEPRO1.COM/PATENTS

PROPRIETARY NOTE:  
THE DATA AND TECHNIQUES CONTAINED IN THIS DRAWING ARE PROPRIETARY INFORMATION OF VALMONT INDUSTRIES AND CONSIDERED A TRADE SECRET. ANY USE OR DISCLOSURE WITHOUT THE CONSENT OF VALMONT INDUSTRIES IS STRICTLY PROHIBITED.

DESCRIPTION  
10' FLEX Fortress™ TRI-PLATFORM MOUNT  
WITH WALKWAYS

CPD NO. SP1		DRAWN BY NSP 12/4/2024		ENG. APPROVAL 1/1/2025	
CLASS 87	SUB 02	DRAWING USAGE CUSTOMER		CHECKED BY JET	1/1/2025

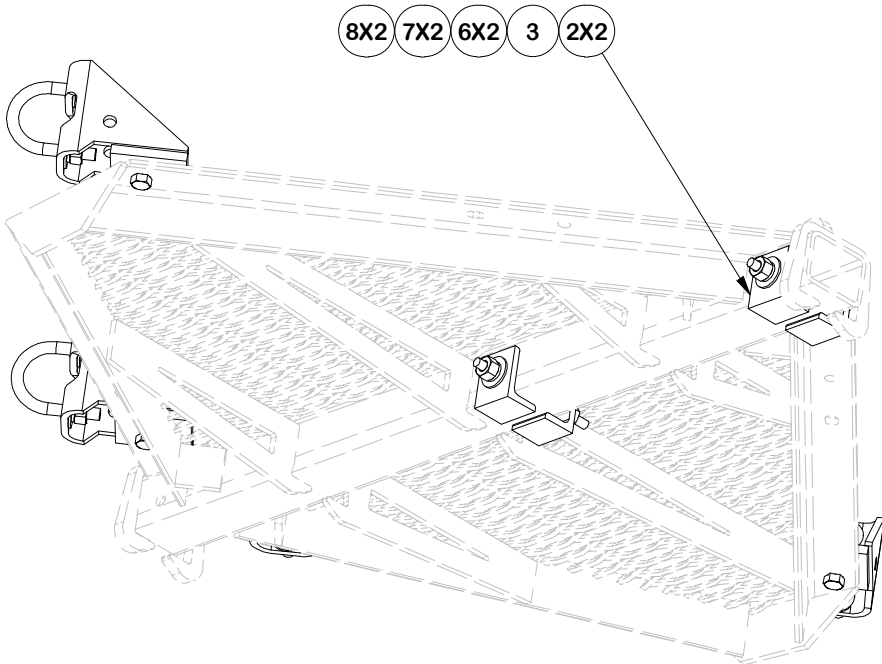
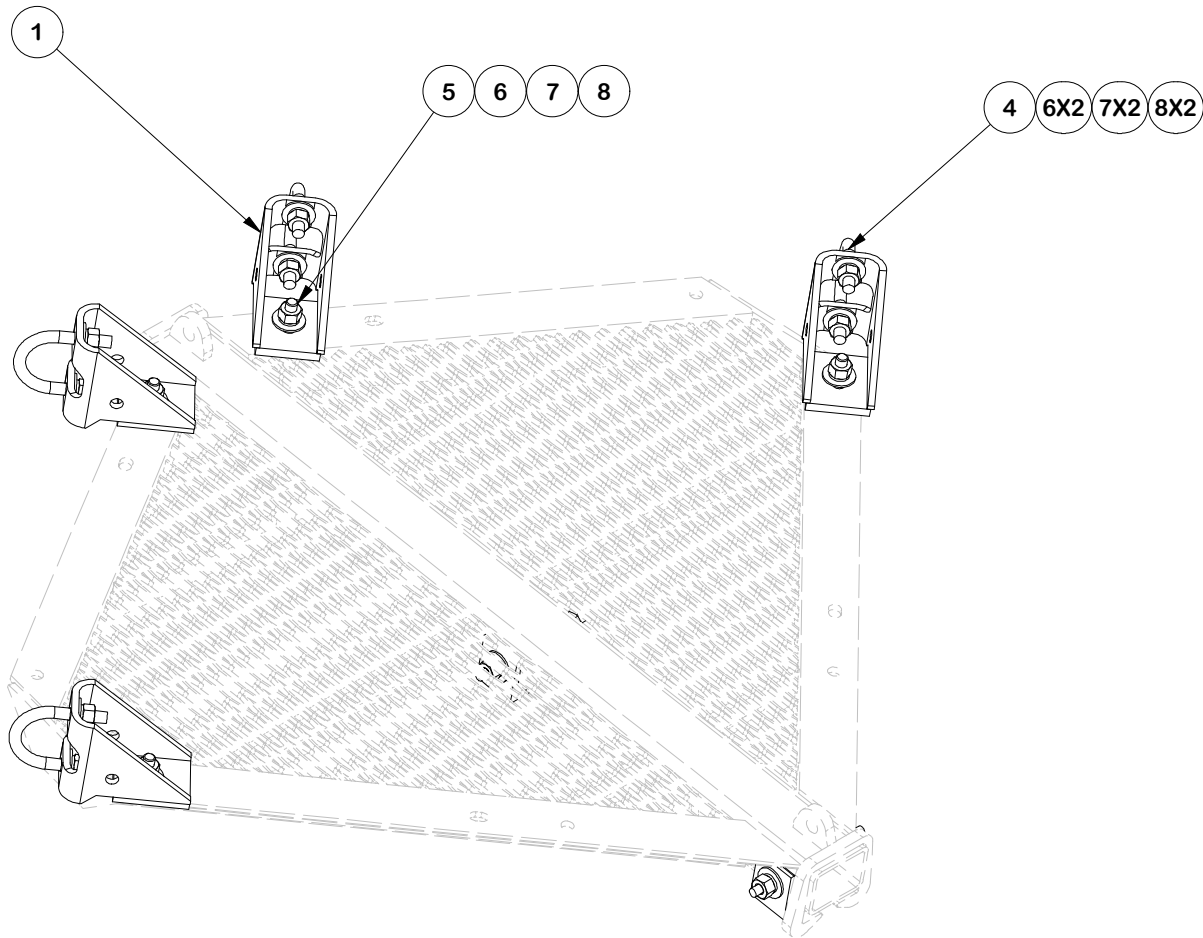


Engineering  
Support Team:  
sp1engineering@valmont.com

A valmont COMPANY

PART NO. FCWHW	9 OF 12 PAGE
DWG. NO. FX3P-10W	

NOTE: FOR 4-SIDED ASSEMBLY, ONLY POSITION OF FACE PIPE CONNECTION BRACKET CHANGES



REPRESENTATION VIEW FOR  
4-SIDED FORTRESS

TOLERANCE NOTES

TOLERANCES ON DIMENSIONS, UNLESS OTHERWISE NOTED ARE:  
SAWED, SHEARED AND GAS CUT EDGES ( $\pm 0.030"$ )  
DRILLED AND GAS CUT HOLES ( $\pm 0.030"$ ) - NO CONING OF HOLES  
LASER CUT EDGES AND HOLES ( $\pm 0.010"$ ) - NO CONING OF HOLES  
BENDS AND ANGLES ARE  $\pm 1/2$  DEGREE  
ALL OTHER MACHINING ( $\pm 0.030"$ )  
ALL OTHER ASSEMBLY ( $\pm 0.060"$ )

PATENT INFORMATION: [WWW.SITEPRO1.COM/PATENTS](http://WWW.SITEPRO1.COM/PATENTS)

PROPRIETARY NOTE:  
THE DATA AND TECHNIQUES CONTAINED IN THIS DRAWING ARE PROPRIETARY INFORMATION OF VALMONT INDUSTRIES AND CONSIDERED A TRADE SECRET. ANY USE OR DISCLOSURE WITHOUT THE CONSENT OF VALMONT INDUSTRIES IS STRICTLY PROHIBITED.

DESCRIPTION  
10' FLEX FORTRESS™ TRI-PLATFORM MOUNT  
WITH WALKWAYS

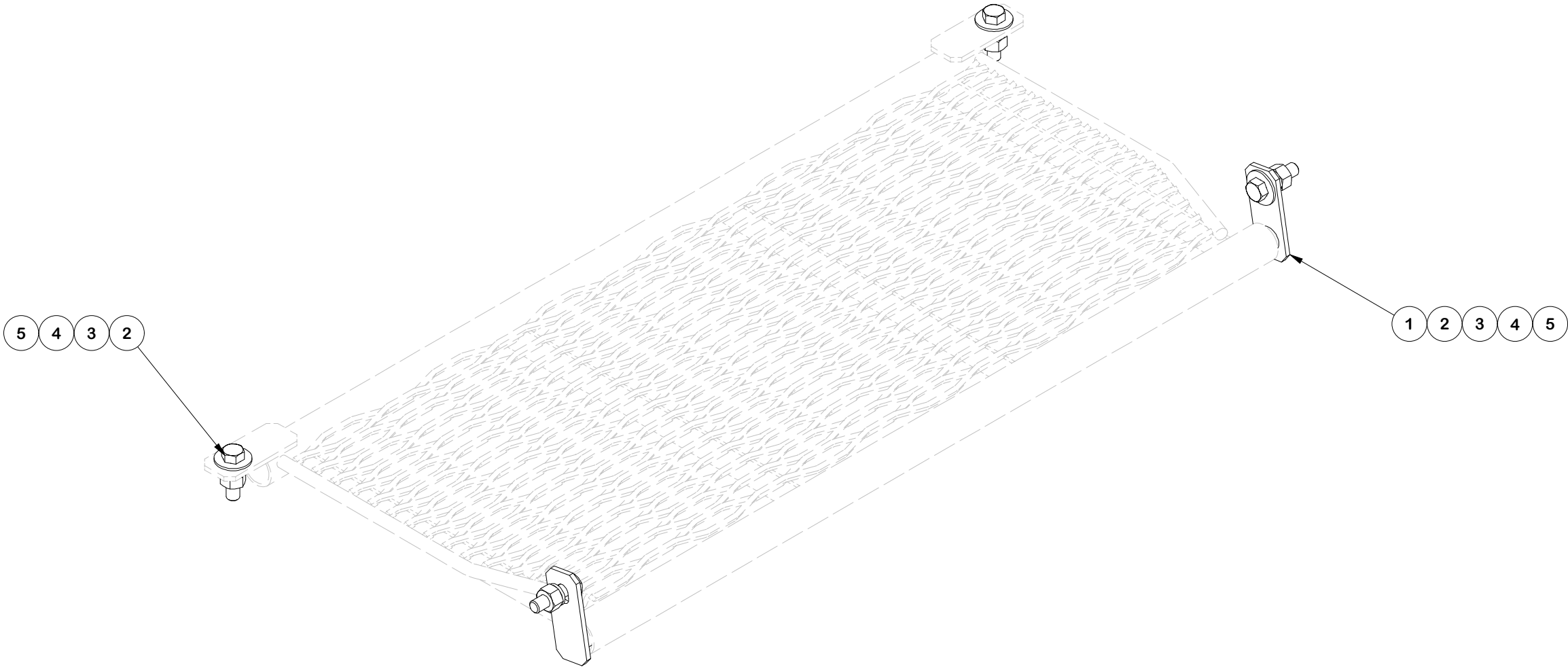
CPD NO. SP1		DRAWN BY NSP 12/4/2024	ENG. APPROVAL 1/1/2025
CLASS 87	SUB 02	DRAWING USAGE CUSTOMER	CHECKED BY JET 1/1/2025



Engineering  
Support Team:  
[sp1engineering@valmont.com](mailto:sp1engineering@valmont.com)

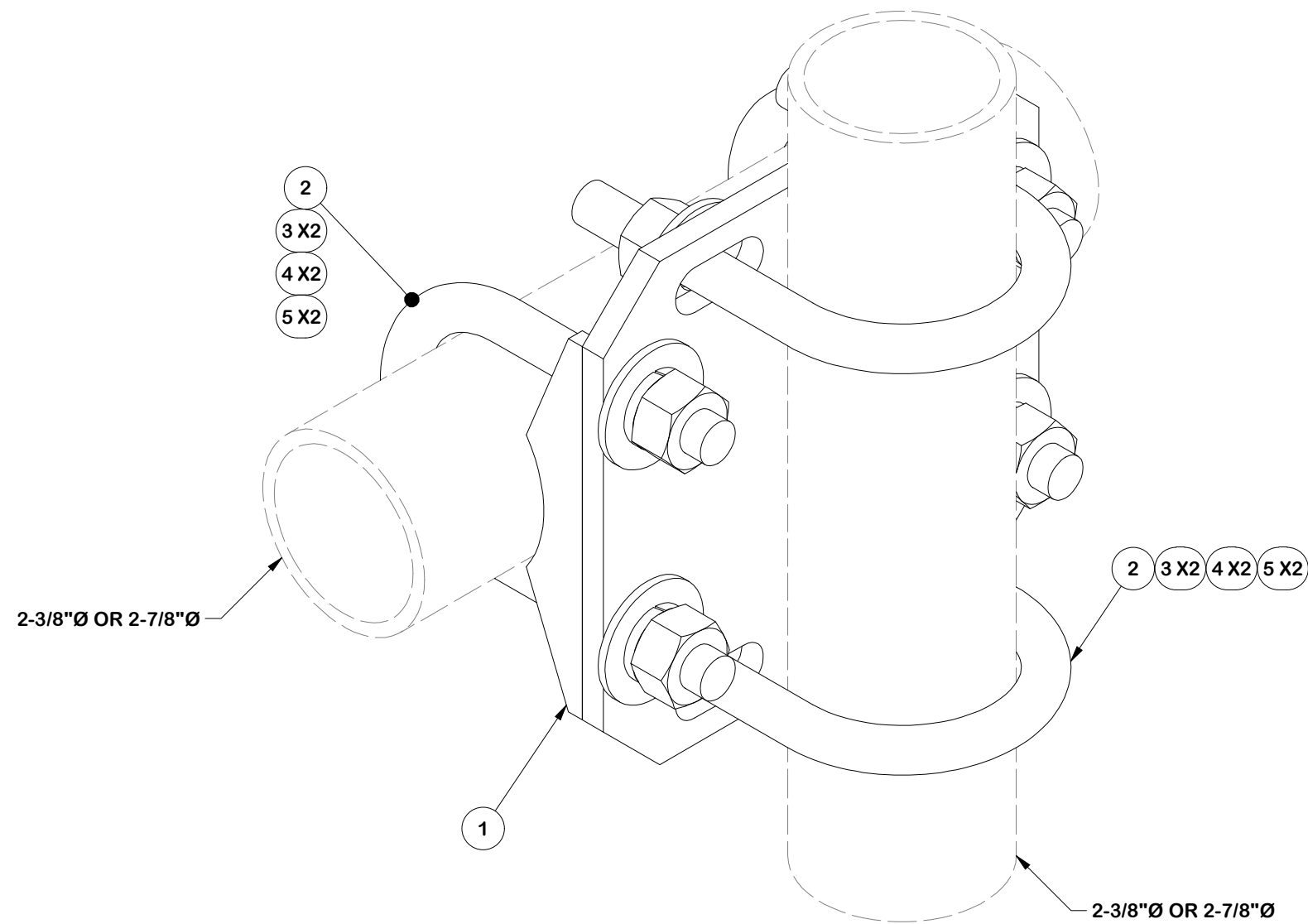
PART NO. FCWHW
DWG. NO. FX3P-10W

PARTS LIST						
ITEM	QTY	PART NO.	PART DESCRIPTION	LENGTH	UNIT WT.	NET WT.
1	2	X-LPP-H	HINGE FOR LOW PROFILE PLATFORM WALKWAY		2.78	5.55
2	4	G58214	5/8" x 2-1/4" HDG HEX BOLT GR5		0.29	1.17
3	4	G58FW	5/8" HDG USS FLATWASHER	1/8 in	0.07	0.28
4	4	G58LW	5/8" HDG LOCKWASHER		0.03	0.10
5	4	G58NUT	5/8" HDG HEAVY 2H HEX NUT		0.13	0.52
					TOTAL WT. #	7.63



	<div>TOLERANCE NOTES</div> <div>TOLERANCES ON DIMENSIONS, UNLESS OTHERWISE NOTED ARE: SAWED, SHEARED AND GAS CUT EDGES (<math>\pm 0.030''</math>) DRILLED AND GAS CUT HOLES (<math>\pm 0.030''</math>) - NO CONING OF HOLES LASER CUT EDGES AND HOLES (<math>\pm 0.010''</math>) - NO CONING OF HOLES BENDS AND ANGLES ARE <math>\pm 1/2</math> DEGREE ALL OTHER MACHINING (<math>\pm 0.030''</math>) ALL OTHER ASSEMBLY (<math>\pm 0.060''</math>)</div>			<div>DESCRIPTION</div> <div>10' FLEX FORTRESS™ TRI-PLATFORM MOUNT WITH WALKWAYS</div>			<div><div><div>SITE PRO 1</div><div>A valmont COMPANY</div></div><div>Engineering Support Team: sp1engineering@valmont.com</div></div>		
	PATENT INFORMATION: WWW.SITEPRO1.COM/PATENTS			CPD NO. SP1	DRAWN BY NSP 12/4/2024	ENG. APPROVAL 1/1/2025	PART NO. FWW-HW	PAGE 11 OF 12	
	PROPRIETARY NOTE: THE DATA AND TECHNIQUES CONTAINED IN THIS DRAWING ARE PROPRIETARY INFORMATION OF VALMONT INDUSTRIES AND CONSIDERED A TRADE SECRET. ANY USE OR DISCLOSURE WITHOUT THE CONSENT OF VALMONT INDUSTRIES IS STRICTLY PROHIBITED.			CLASS 87	SUB 02	DRAWING USAGE CUSTOMER	CHECKED BY JET 1/1/2025		DWG. NO. FX3P-10W

PARTS LIST						
ITEM	QTY	PART NO.	PART DESCRIPTION	LENGTH	UNIT WT.	NET WT.
1	1	X-SCX3-FR	FORTRESS CROSSOVER PLATE		6.61	6.61
2	4	X-UB5300	5/8" X 3" X 5-1/4" X 2-1/2" U-BOLT	5 1/4 in	1.22	4.87
2	4	X-UB5258	5/8 X 2-5/8" X 4-1/2" X 2" U-BOLT	4 1/2 in	1.06	4.24
3	8	G58FW	5/8" HDG USS FLATWASHER	1/8 in	0.07	0.56
4	8	G58LW	5/8" HDG LOCKWASHER		0.03	0.21
5	8	G58NUT	5/8" HDG HEAVY 2H HEX NUT		0.13	1.04
					TOTAL WT. #	17.53



FINISH:  
HOT DIP GALVANIZED.

TOLERANCE NOTES

TOLERANCES ON DIMENSIONS, UNLESS OTHERWISE NOTED ARE:  
SAWED, SHEARED AND GAS CUT EDGES ( $\pm 0.030"$ )  
DRILLED AND GAS CUT HOLES ( $\pm 0.030"$ ) - NO CONING OF HOLES  
LASER CUT EDGES AND HOLES ( $\pm 0.010"$ ) - NO CONING OF HOLES  
BENDS AND ANGLES ARE  $\pm 1/2$  DEGREE  
ALL OTHER MACHINING ( $\pm 0.030"$ )  
ALL OTHER ASSEMBLY ( $\pm 0.060"$ )

PROPRIETARY NOTE:  
THE DATA AND TECHNIQUES CONTAINED IN THIS DRAWING ARE PROPRIETARY INFORMATION OF VALMONT INDUSTRIES AND CONSIDERED A TRADE SECRET. ANY USE OR DISCLOSURE WITHOUT THE CONSENT OF VALMONT INDUSTRIES IS STRICTLY PROHIBITED.

DESCRIPTION  
10' FLEX FORTRESS™ TRI-PLATFORM MOUNT  
WITH WALKWAYS

CPD NO. SP1		DRAWN BY NSP 12/4/2024	ENG. APPROVAL 1/1/2025
CLASS 87	SUB 02	DRAWING USAGE CUSTOMER	CHECKED BY JET 1/1/2025

SITE  
PRO

1

A valmont COMPANY

Engineering  
Support Team:  
1-888-753-7446

Locations:  
New York, NY  
Atlanta, GA  
Los Angeles, CA  
Plymouth, IN  
Salem, OR  
Dallas, TX  
Tampa, FL

PART NO. SCX3-FR-K	PAGE 12 OF 12
DWG. NO. FX3P-10W	